

DEP Briefing

- Obstacle / Wind
- Departure procedure (sector, HIGE/HOGE)
- Limitations (LMP / MCP / VNE)
- Emergency

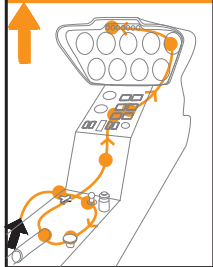
R22 Beta II

BRIEFINGS & CHECKS

APP Briefing

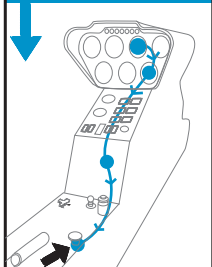
- REKO (W A HI BEL U)
- Elevation
- Limitations (LMP / HOGE)
- Emergency / Escape

Check bef. DEP



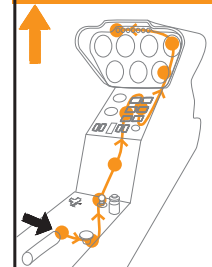
- Friction's: **OFF**
- Trim: **OFF**
- Carb Heat: **as required**
- Governor: **ON**
- Ldg. light: **as required**
- Fuel: ... **ENDURANCE**
- T's & P's: **GREEN**
- RPM: **102-104%**
- **NO** warnings/cautions

Climb check



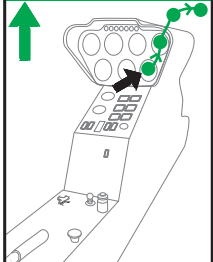
- Climb speed: **60 KIAS**
- Power: **21 inch MCP**
- Ldg. light: **as required**
- Carb heat: **as required**

Check for APP



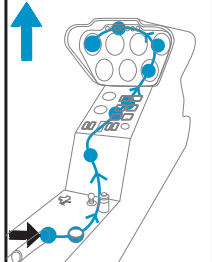
- Governor: **ON**
- Carb Heat: **ON**
- Trim: **OFF**
- Ldg. light: **as required**
- Fuel: ... **ENDURANCE**
- T's & P's: **GREEN**
- Speed: **70 KIAS**
- RPM: **102-104%**
- **NO** warnings/cautions

Hover check



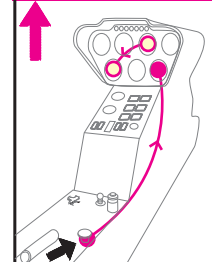
- Power: ... **inch MP**
- RPM: **102-104%**
- Wind: ...
- DEP Sector: **Obstacle**

Cruise check



- Governor: **On**
- Carb heat: **as required**
- Ldg. light: **as required**
- Fuel: ... **ENDURANCE**
- T's & P's: **GREEN**
- Power: **20 inch - MCP**
- RPM: **102-104%**
- **NO** warnings/cautions
- Altimeter: **as required**

Final check



- @ 40 KIAS:
- Carb heat: **as required**
- MP > **11 inch**
- **Safety window:**
- **30 KIAS / 300 ft ROD**
- Decision:
- -> **Land / Go around**